

Protect electrical appliances, mainly
used for short circuit protection.



Honest, reliable, sustainable development

Fuse

30A

BFS 30A Fuse Holder was designed and manufactured, complying with the standard IEC60947-3. The Rated Current up to 30A, rated 1000V DC. It is applied for PV DC combiner box, inverter etc, with the function of over-current protection and effective disconnection.



Honest, reliable, sustainable development

Protect electrical appliances, mainly used for short circuit protection.

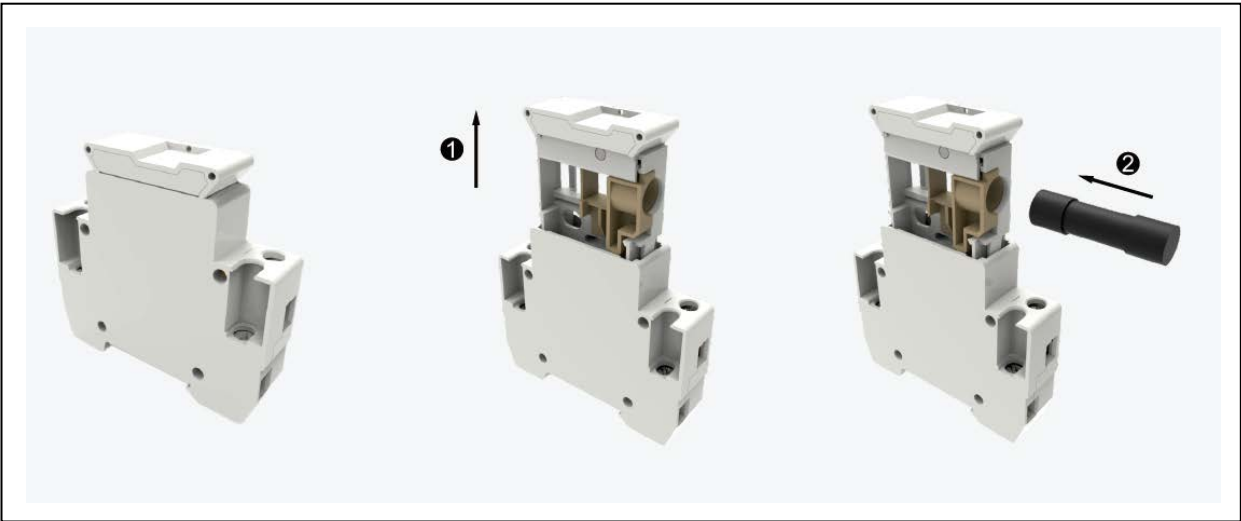


Honest, reliable, sustainable development

Technical data

Parameter	
Fuse HolderPole	1P
According to	IEC60947-3
Electrical Characteristics	
Rated Working Voltage	1000V DC
Rated Current	30A
Breaking Capacity	20KA
Max Power Dissipation	3W
Control and Indication	
Operating State/Fault Indication	Indicator Light OFF/Indicator Light ON
Connection and InstallationWire	2.5mm ² - 6mm ²
Terminal Screws	M3.5
Torque	2.5
Degree of Protection	IP20
Installation Environment	
Fuse Size	10x38mm
Operating Temperature Range	-30℃~+70℃
For Mounting On	TH35-7.5/DIN353
Pollution Degree	+20℃≤95%,+40℃≤50%
Relative HumidityWeight	0.07kg Per pole
Installation Class	III

Peplacement Fuse

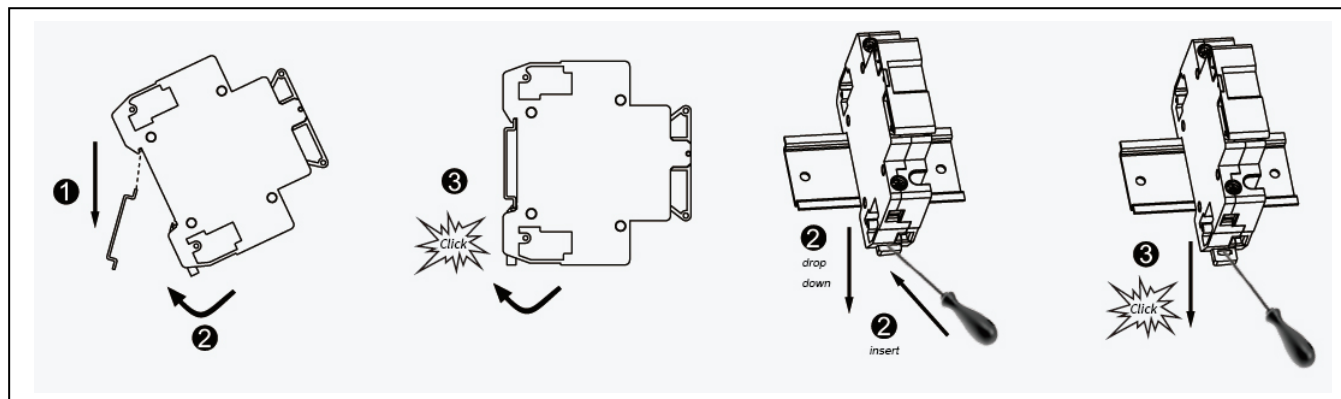


Protect electrical appliances, mainly used for short circuit protection.



Honest, reliable, sustainable development

Installation



Replacement Fuse

